

**Board of Management, Quaid-E-Azam Industrial Estate,
Kot Lakhpat, Lahore**

Bidding Document



**“Procurement, Supply, Installation, Testing & Commissioning of 60-KW
ON-Grid Ground Mounted Elevated Structure PV Solar System S-Block
Tube-well on Turnkey Basis**

at

**BOARD OF MANAGEMENT QUAID-E-AZAM
INDUSTRIAL ESTATE**



Handwritten signatures and initials in blue ink.

BIDDING DOCUMENT

**"Procurement, Supply, Installation, Testing & Commissioning of 60-KW ON-Grid
Ground Mounted Elevated Structure PV Solar System S-Block Tube-well on
Turnkey Basis**

at

**Board of Management, Quaid-E-Azam Industrial Estate,
Kot Lakhpat, Lahore**

Last date of submission: 13-01-2026

A. H. Int. RCB



1. Overview

Board of Management, Quaid-E-Azam Industrial Estate, Kot Lakhpat, Lahore intends "Procurement, Supply, Installation, Testing & Commissioning of 60-KW ON-Grid Ground Mounted Elevated Structure PV Solar System S-Block Tube-well on Turnkey Basis as provided at **Annex 'A'** and technical scope of work at **Annex 'B'**". The supplier will be responsible for procurement, Supply, Installation, testing and commissioning of items, wherever required, at the Board of Management, Quaid-E-Azam Industrial Estate, Kot Lakhpat, Lahore. This document provides complete instructions for bidders intending to participate in this Bidding.

2. Instructions for Bidders

- 2.1 Procurement will be made as per PPRA Rules 2014, as amended to date, single stage one envelopes procedure. The Board of Management, Quaid-E-Azam Industrial Estate, Kot Lakhpat, Lahore invites bids from manufacturers, suppliers and distributors for supply as per specifications, scope of work and requirements given in the Bidding Documents.
- 2.2 The bids shall be submitted on E-PAD (mandatory). The complete E-bids must be submitted online on e-procurement system (E-pads) website i.e. www.punjab.eprocure.gov.pk Bidders are advised to ensure uploading the Bids on EPADS portal, well before the submission of deadline.
- 2.3 Response to the Tender (Bid) should be submitted/uploaded on EPADS before **02:30 PM** on **13-01-2026**. Proposals will be opened on same day at **03:00 PM** on EPADS and successful / unsuccessful bidder information will be furnished / uploaded after evaluation.

Sr. Estate Manager,
169-A/S, Quaid-e-Azam Industrial Estate, (Kot Lakhpat),
Lahore Ph: +92 42 99330357-9
Email: info@qie.com.pk , Website: www.qie.com.pk

[Handwritten signatures]



2.4 All bids must be submitted/ uploaded by filling the Annex 'C'. Same should be enclosed in the proposal. Bidder must use the same numbers and labels as used in this Request for Proposal.

2.5 The original Bidding Document duly signed and officially sealed by the bidder must be submitted / uploaded complete in all respect with the proposals. Any conditional, ambiguous, incomplete, supplementary or revised offer after the opening of Tender shall not be entertained.

3. Technical Proposal Format

Bidders are required to include **all of the following documents/information** in their technical proposals in the order given below:

- i. Profile of company.
- ii. Valid PEC Registration Certificate of at least C6 or above Category
- iii. Valid Alternative Energy Development Board (AEDB) at least C3 or above category registration certificate/ license
- iv. List of 60 KW or above projects completed in last three years Purchase Orders should be attached with technical bid
- v. Minimum 03 years experience in Solar from the date of incorporation
- vi. System design report generated through solar PV simulation software (Helioscope) year wise AC energy injection in grid.
- vii. Legal registered entity (Sole Proprietor, Registration with SECP or Registrar of Firm) having active NTN, GST and PST, if applicable
- viii. Complete Income Tax Return for last one tax year
- ix. An affidavit on Rs 100/- Stamp Paper which illustrate that currently they are not black listed by PPRA Punjab, and PIEDMC, Quaid-e-Azam Industrial Estate Board, Lahore
- x. Details of all the items & specifications provided by supplier against items detailed as given at annex 'A' on Company Letter Head with signed and stamped.
- xi. After Sale Service and Warranty for 1 Year (Signed Statement on Company Letter Head)
- xii. Acceptance of technical scope of work and requirement of project as provided in Annex 'B' on Company Letter Head with signed and stamped.
- xiii. Signed and Stamped Complete bidding document.
- xiv. Bank Draft of the Bid Security must be attached with technical proposal as per estimated cost mentioned in the Tender notice/Invitation to Bid.

4. Financial Proposal Format

Financial Proposal must include the following in the order given below:

- i. Prices duly entered on the form in the attached BOQ
- ii. Validity period of the quoted price



5. Terms & Conditions

- 5.1 This invitation for bids is open to all national original Manufacturers/ Distributors/Suppliers in Pakistan,
- 5.2 All prices should be quoted in Pak Rupees and inclusive of all Government Taxes & Levies.
- 5.3 A bank draft equal to 2% of the total estimated cost mentioned in Tender notice/Invitation to e-Bid should accompany the Bidding Document as **Bid Security** drawn in favor of **PIEDMC-Quaid-e-Azam Industrial Estate Board, Lahore**. The Bidding Document shall not be considered without Bid Security. Bank draft for Bid Security must be attached on EPADS under Bid security details and also attached with technical Bid in PDF Form and original Bid Security must be submitted in QIE Office situated at 169-A/S, Board of Management Quaid-e-Azam Industrial Estate (Kot Lakhpat) Lahore before deadline.
- 5.4 Bid Security for bidders not selected will be returned a minimum of two weeks after announcement of award and returned to successful bidder after issuance of Purchase order/work order. If the selected bidder fails to accept the work order/purchase order with in stipulated time, Bid Security will be forfeited. Bid security will be returned **only upon submission of a written request** on the bidder's **official company letterhead**, addressed to the **Senior Estate Manager, QIE**.
- 5.5 A Bank draft of 10% of the total bid amount as **Performance Guarantee** will be provided by the supplier in favor of **PIEDMC-Quaid-e-Azam Industrial Estate Board, Lahore** after issuance of Letter of Intent which shall be released on submission of invoice from supplier after successful completion, installation and commissioning of 60-KW solar system and 10 % payment from invoice will be retained as defect liability payment which will be released after the completion of warranty/guarantee/DLP period.
- 5.6 The decision of the QIE competent authority will be binding on all concerned and will in no case be challenged in any forum.
- 5.7 Board of Management, Quaid-E-Azam Industrial Estate, Kot Lakhpat, Lahore reserves the right to modify the conditions / specifications of the Bidding Document with intimation to all the participants.
- 5.8 The delivery of all goods, equipment, and services shall be carried out strictly in accordance with the schedule mutually agreed upon and specified in the Purchase Order / Supply Order and the Contract Agreement. The supplier shall be fully responsible for ensuring timely delivery as per the terms & conditions outlined in the contractual documents.
- 5.9 In case the selected bidder fails to execute the purchase order strictly in accordance with the terms and conditions laid down in the purchase order and contract agreement, the



Performance Guarantee shall be forfeited.

- 5.10 The Board of Management, Quaid-E-Azam Industrial Estate, Kot Lakhpat, Lahore will get all the items inspected at BOM, QIE Office situated at 169-A/S, Board of Management Quaid-e-Azam Industrial Estate (Kot Lakhpat) Lahore and reject the Item, if not found according to the stated specifications.
- 5.11 The Board of Management, Quaid-E-Azam Industrial Estate, Kot Lakhpat, Lahore reserves the right to claim compensation for the losses caused by delay in the delivery of items.
- 5.12 It is the sole responsibility of the bidder to comply with local, national and international laws.
- 5.13 In case any supplies is found not in conformity with the specifications provided in the Bidding document, either on account of inferior quality, defective workmanship, faulty design, or is short supplied, or wrongly supplied, the supplier will replace the same free of charges or pay the full cost of replacement.
- 5.14 All the proposals submitted online through EPADS.
- 5.15 All prices should be valid for 180 days. Withdrawal or any modification of the original offer within the validity period shall entitle the Board of Management, Quaid-E-Azam Industrial Estate, Kot Lakhpat, Lahore to forfeit the Bid Security in favor of the Board of Management, Quaid-E-Azam Industrial Estate, Kot Lakhpat, Lahore and/or putting a ban on the future inquires or taking any other suitable action against the bidder.
- 5.16 Delivery of all the Items will be free of charge at BOM, QIE Office situated at 169-A/S, Board of Management Quaid-e-Azam Industrial Estate (Kot Lakhpat) Lahore during the office hours with a copy of Delivery Challan.
- 5.17 All Items should be brand-new and according to order specification and covered under normal warranty/guarantee etc. as mentioned in the quote.
- 5.18 Payment will be released after the successful installation testing and commissioning of project through cross cheque after deduction of applicable taxes through Finance Department, BOM-QIE.
- 5.19 In case of discrepancy between the unit price and total price that is obtained by multiplying the unit price and quantity, the unit price shall prevail and total price shall be corrected. In case of discrepancy between total price in figure and in words the price written in words shall prevail.
- 5.20 All prospective bidders are **strongly advised to conduct a site visit** prior to the submission of their bids in order to thoroughly understand the site conditions, assess installation requirements, and address any design or technical queries. Site visits may be

[Handwritten signature]



carried out from the date of this notice **up to the bid submission and closing date, i.e., 13th January 2026**, during regular working days and hours (**Monday to Friday, from 09:00 AM to 05:00 PM**).

6 Evaluation Criteria

All bids shall be evaluated on technical and financial merit. The Company Evaluation Criteria is attached at **Annex 'D'** for reference. It is mandatory for all bidders to fully comply with the requirements and submit all documents as outlined in Annex-D. Bids that do not meet the specified criteria, or fail to attach the required documentation, shall be considered non-responsive and will be disqualified.

7 Undertaking

On behalf of the company, it is certified that we agree to the all the Instructions and Terms & Conditions given in this Bidding Document

Name of bidder.....

Authorized person.....

Authorized signature.....

Stamp.....

Office Address.....

Tel No

Fax No

[Handwritten signatures]



Annex 'A'

"Procurement, Supply, Installation, Testing & Commissioning of 60-KW ON-Grid Ground Mounted Elevated Structure PV Solar System S-Block Tube-well on Turnkey Basis"

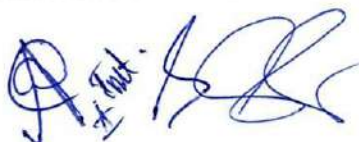
Sr.	Description along with Specifications equivalent or better	Qty
1	<u>Solar Panels:</u> On-Grid PV Solar panels 60KWp with Mono Perc Half Cut Cell Panels Grade-A, Tier 1 category, 590W N-Type Bi-facial with 12-years product warranty and 25-30years Linear output power performance warranty etc. Jinko N-Type Bifacial solar with online monitoring system and Goods Declaration (GD).	102
2	<u>Inverter:</u> 50-KW, 3-phase ON-Grid Inverter. Efficiency 98.7%, Max. Current per MPPT 22A, Max Isc per MMPT 27A, Max. Iout 80A, MPPT Vop Range 200 V ~ 1,000 V, Max. Total Harmonic Distortion <3%, IP65, online monitoring with compatible smart energy meter (Huawei equivalent or better) including SIM with online monitoring internet package	01
3	<u>Structure:</u> <ul style="list-style-type: none"> Galvanized Elevated structure H+U (Mughal Brand) Column :76.2x127x3mm (WT=1.6 KG per foot)(MS) Lintel: 76.2x127x3mm (WT=1.6 KG per foot)(MS) Purlin : 80x50x15x1.5mm (WT= 800 G per foot)(GI) H-Beam 3"x5"x3mm (GI) with tilt angle atleast 05°. Base Plate : 254x254x10mm (MS) Rafter Base plate : 150x150x8mm (MS) Support angle : 38x38x1.5mm (MS) End and Mid Clump: 60mm (SS) Joint Plate : 70x40x5mm (MS) SS Nut Bolts : 10x25mm (SS) J- Bolts : 6' length 16mm (GI) No of column: 35 No.s <p>Complete Civil work, Base Plate, civil foundation as per design and Structure drawing in tender documents. (Mughal equivalent or better) red oxide, MS Enamel paint.</p>	Job
4	<u>Cables and Wires:</u> <ul style="list-style-type: none"> XLPE/XLPO & Tin coated DC wire to connect inverter with the solar panels (6mm) (Newage Cable) AC wire from inverter to Main box (4core 70mm)(Newage) Disconnect switch wire 4 core 120mm (Newage Cable) Earthing wire to support Inverter (16mm) (Newage Cable) Earthing wire to support Panel to panel Earthing (16mm) Earthing wire to support lightning arrester (16mm) Panel to panel earthing 	Job
5	<u>Solar Distribution Box:</u> <ul style="list-style-type: none"> Distribution Box DC (DC fuses, DC Breakers, DC SDP)(Schneider) Distribution Box AC (AC SPD 40K 4 pole, MCCB 200A 4 pole) (Schneider/ABB) Disconnect Breaker with Box(MCCB 250A 4 pole) (ABB/Schneider), MC4 Connectors 	Job
6	<u>Earth Pits:</u> <ul style="list-style-type: none"> AC, DC & (01) lightning arrester Earthing with DB boxes to support installation. Depth 60 feet each (resistance Value less than 4 ohms), Insulator boxes 	Job
7	<u>Electrical Components:</u> <ul style="list-style-type: none"> UPVC Duct, UPVC Pipes, Conduits, Tapes, Cable Ties, Cable tray PV Connectors, Thimbles, Insulation tapes & Flexible pipe etc. (Popular) 	Job
8	<u>Net Metering:</u> <ul style="list-style-type: none"> Net Metering application and all dealings with DISCOs AMI Bi-Directional meters (2) NEPRA and LESCO Processing Fees 	Job
9	<u>Turnkey Activities:</u> Installation of Electrical, mechanical and accessories, Labour work with erection, Testing, Commissioning & Transportation also delivery	Job

[Handwritten signatures]



TECHNICAL SCOPE OF WORK

1. "Bid for 60-KWp Ground Mounted On-Grid Elevated Structure PV Solar System on turnkey basis".
2. The project will be implemented on Turnkey basis and Ground Mounted at S-Block Tube-well, QIE.
3. 60-kWp PV System refers to the supply, installation, testing, and commissioning of 60 kWp photovoltaic (PV) modules rated at Standard Test Conditions (STC), expected to generate an average of 6120 kWh monthly, with $\pm 5\%$ tolerance. This system will be integrated with newly installed inverter, and includes all necessary DC/AC cabling, mounting structure, AC distribution cabinet, and associated accessories on a turnkey basis. The scope includes integration with the inverter, ensuring full compatibility and performance optimization of the overall system. This also includes free one-year service (labour, spares, and material), covering: Availability of service personnel as and when required for any system fault, Fault diagnosis, repair, and replacement of defective components, Preventive and corrective maintenance. Response time within 24 hours of receiving call/SMS/email
4. **Note:** PV module cleaning is not included in the scope of service.
5. The selection and evaluation of item(s) will be carried out strictly in accordance with the Bids Evaluation Criteria provided in Annex-D. It is mandatory for all bidders to fully comply with the requirements and submit all documents as outlined in Annex-D. Bids that do not meet the specified criteria, or fail to attach the required documentation, shall be considered non-responsive and will be disqualified.
6. All bidders are need to follow design as per tender document of Annex-E. **(Mandatory)**
7. All bidders shall provide complete BOQ as per FORM-D of this tender document (Name of each item, description of each item, Brand Name, Country of Origin, Manufacturer Name, Model and Quantity) duly signed and stamped. Complete BOQ is mandatory for qualification of bid and without BOQ bids will be rejected. BOQ must consist of Solar PV modules with cables and MC4 connectors, Solar Panel Mounting structure, Combiner Boxes with AC/DC Circuit breakers, AC/DC SPDs, DC Fuses, PV DC Cables, (circuit breakers, Contactors, control breakers, Solar PV synchronizer/controller) connectivity of Earthing conductor with lightning arrestor, Transportation, installation, testing and commissioning complete with all accessories. **(Mandatory)** as per Annex-C and bidders will not be allowed to change brands after the bid submission.




8. It is the sole responsibility of the bidder to ensure that they have obtained all necessary information related to the site and project scope before submitting their bid. No claims or requests for clarification will be entertained after the bid submission deadline due to lack of site inspection. Bidders are encouraged to coordinate their visit in advance with the designated contact person to facilitate access and guidance during the site inspection.

9. SOLAR PV SYSTEM

20.6KWp (Rated PV Capacity at STC) Ground Mounted On-Grid Elevated structure solar PV System on turnkey basis to be installed at S-Block tube-well, QIE. A complete Single Line Diagram (SLD) from PV Modules to Injection must be given. System must be net metering compliant fulfilling all the requirements of net metering SOPs of local DISCO and NEPRA SRO 892(1)/2015. The system must be complete with protections devices (earthing, DC disconnects, surge protections, connectivity with existing Lightening arrestors etc), solar mounting structure at concrete pads at ground mounted civil work for concrete foundation will be responsibility of the Bidder Detailed drawing attached as annex-E, distribution Cabinet, PV Synchronizer etc. Breakers, solar energy meter. System must be capable of remote monitoring of energy parameters on Mobiles. System must be complete with all components and accessories.

SOLAR PV MODUELS

- Solar Panel N-Type Bi-Facial Technology will be half cut Mono PERC Technology.
- Solar PV modules should be Grade-A, Tier-1 type as per Bloomberg List.
- Each PV module shall be 590W MONO PERC Half Cut N-Type Technology.
- The modules must have efficiency not less than 22.6%.
- Power Degradation Factor not more than 0.45% annually after first year.
- Modules must be TUV Rhineland certified as per IEC standards 61215 and 61730 latest edition.
- Modules should be free of PID and must include PID free certificate.
- Minimum 12 years replacement warranty and 25-30 years Linear Output power performance warranty
- International insurance Guarantee against 25-30 years linear output power performance.
- Array configuration must be compatible with Inverters and vice versa. PV to Inverter downsizing may not be more than 20%.
- PV panels with tilt angle between 05~15 degree.
- Size of total PV modules: Not less than 20.6KWp at STC.
- Flash Test report and Module Test report as per standards 61215 and 61730 should be provided at the time of supply.
- Must be supplied with connected cables and MC4 connectors.
- Preferred N-Type Bi-Facial brands will be Jinko Solar Compatible with new 50-KW ON-Grid Huawei Inverter.
- Annual degradation should not be more than 0.45% annually after first year.



SOLAR ON-GRID INVERTERS

- Type of Inverters = Three phase On-Grid Tied String Inverters
- 05 years warranty from the date of installation and commissioning.
- Make: USA/EUROPE/CHINA (Preferred brands will be Huawei Sun series Equivalent or better only)
- Size of Inverter: 50KW of Nominal AC Output power.
- Input Voltage D.C max: 1100Vd.c
- Maximum Efficiency: not less than 98.7%. Total Harmonic Distortion: Less than 03%
- Max Isc per MMPT 27A, Max. Output Current 84A; 380Va.c, MPPT Operating Voltage Range 200 V ~ 1,000 Vd.c.
- Standards compliance: UL 1741, IEC 62109-1/2, IEC 62116, IEC 61683 and IEC 61727
- Degree of protection: IP 66, Protection Class: 1
- Built with data logger, 4-G Wifi stick, Sim inserting option, communication interfaces protections and remote monitoring capability. Online monitoring with compatible three phase smart energy meter with installed SIM and internet package atleast 01-year or lifetime.
- Solar Inverter should be with lock and key provided by bidder.
- 3-phase On-grid Solar Inverter with compatible three phase multifunction smart meter device.

SOLAR MOUNTING STRUCTRE

- Rust proof red oxide with MS Coated enamel painted (Masters equivalent or better) Ground mounted elevated special structure (Parking shed) with proper concrete footing civil work detailed structure and foundation drawing attached as per **Annexure –E** in tender documents.
- Nuts, Bolts, J-Bolts, Washers and other supporting must be of stainless steel with appropriate gauges as per design with rust proof capability.
- Undersized gauge is not allowed. PV panels with tilt angle between 05~20 degree.
- Preferred brands will be Mughal, equivalent or better with H/I Beam Girders with C/U Channels (H+U) red oxide with rust proof MS Coated enamel paint with proper J-Bolts and anchoring SS nut bolts etc as per annexure-E.

COMBINER BOXES

- Must be manufactured with powdered coated, GI material with 99.99% pure copper strips in it for termination of PV arrays. Must comply with IP 65 and must house breakers.



MC4 CONNECTORS

Qty: As per design

Current rating: As per design (atleast 250-A, 4-Pole water proof external disconnecter switch with Distribution Box Preferred brands will be original Schneider, ABB equivalent or better)

Ingress protection: IP 66

Standard Compliance: EN 50521:2008

REMOTE MONITROING

System must have capability for remote monitoring complete with communication interfaces, data logging and software. Successful bidder has to configure the whole system and show monitoring at Laptop or PC the parameters like Load watts, PV watts, DC energy and AC Injected energy, Panel temperature, wind speed, data graphs and patterns etc.

CIVIL WORK

Civil work for mechanical structure placement will be the responsibility of the bidder. Walkways without ladder of appropriate width and height shall be provided between solar panels arrays as per annexure-E.

SYSTEM PROTECTIONS

- 1) System must be completed with all protections including DC and AC Disconnectors, DC/AC Surge protection, DC Fuses, lightening arresters, Grounding/Earthing etc.
- 2) **Surge Protection:**
 - i. Surge protection shall be provided on the DC side and the AC side of the system.
 - ii. The DC surge protection devices (SPDs) shall be installed in the DC distribution box adjacent to the solar grid inverter. DC Fuses as well.
 - iii. The AC SPDs and breaker shall be installed in the AC distribution Cabinet.
 - iv. The SPDs earthing terminal shall be connected to earth through the above mentioned dedicated earthing system.
 - v. The Lightning arresters Copper rod copper screws , nuts bolts with atleast 16mm bare copper conductor need to be provided with proper earthing bore atleast 60feet with earthing powder and copper wire.

EARTHING PROTECTION

Three separate dedicated and interconnected earth electrodes with Copper base plate must be used for the earthing of the solar PV system support structure with a total earth resistance not exceeding 03 ohms as below:

- (i) Equipment earth (DC) with proper DC bore (50 to 60feet) with Installation Box / cabinet
- (ii) System earth (AC) with proper AC bore (50 to 60feet) with Installation Box / cabinet
- (iii) Lightning arrester with proper earthing bore. (50 to 60feet) with Installation Box / cabinet

Both equipment earth (DC) and system earth (AC) shall be checked for proper earthing.



Equipment earth (DC): All metallic parts such as Structure of PV modules, DCDB, Panels and Distribution boards will be connected to earth with two separate and distinct earth connections to avoid any loss of property or Human being.

- (ii) System earth (AC) with proper AC bore (50 to 60feet)
- (iii) Lightning arrester with proper earthing bore. (50 to 60feet)

Both equipment earth (DC) and system earth (AC) shall be checked for proper earthing.

Equipment earth (DC): All metallic parts such as Structure of PV modules, DCDB, Panels and Distribution boards will be connected to earth with two separate and distinct earth connections to avoid any loss of property or Human being.

NET METERING/BILLING

Solar system must comply with the SRO 892(1) 2015 and DISCO SOP for net metering. Successful bidder will process the net metering license as per DISCO SOPs and NEPRA SRO after the complete installation. Bidder should include all expenses for net metering as separate head under services in FORM C. Bidder must have net metering permission License from AEDB. BOM-QIE will provide assistance in this regard.

PV DC CABLES

- 99.99% copper cables with conductor withstanding at temperature of 90 Degree.
- Cables must be double insulated suitable for 1.5 KV DC Transmission.
- Weather resistant, UV resistant, Ozone corrosion resistant, halogen free and flame resistant.
- XLPE/XLPO & Tin coated 6mm Insulation withstanding temperature range from -4°C to 90°C.
- Preferred brands for AC/DC Cables will be New-age equivalent or better.

AC POWER DISTRIBUTION CABINET

- 99.99% 4-C, 70mm sq copper cables from inverter to main box and 4-Core 120mmsq copper cable from disconnects switch to ATB boxes / Bidirectional meters will be New-age equivalent or better. AC Power Distribution cabinet must contain AC 4-Pole, 250-Amp original circuit breaker (Schneider, ABB equivalent or better, contactors, bus bars, energy analyzer and main switch with monitoring of Voltage, current, Power, Energy and power factor. The components must of high quality complying with national standards of switchgears.

INJECTION OF ENERGY

Energy will be injected at 440V Distribution panel available but the bidder has to supply AC distribution cabinet with built-in protection, automatic and manual isolation from the distribution circuit.



Annex "C"

"Procurement, Supply, Installation, Testing & Commissioning of 60-KW ON-Grid Ground Mounted Elevated Structure PV Solar System S-Block Tube-well on Turnkey Basis, OIE

(Bid Form)

Sr. No.	Name of Items	Quoted Brand & Model	Required Qty.	Unit Price (Inclusive of all taxes) PKR	Total Price (Inclusive of all taxes) PKR
1					
2					
3					
4					
5					
6					
7					
8					
9					
Total Price (inclusive of all taxes) in Figures					
Total Price (Inclusive of all Taxes) in Words:					

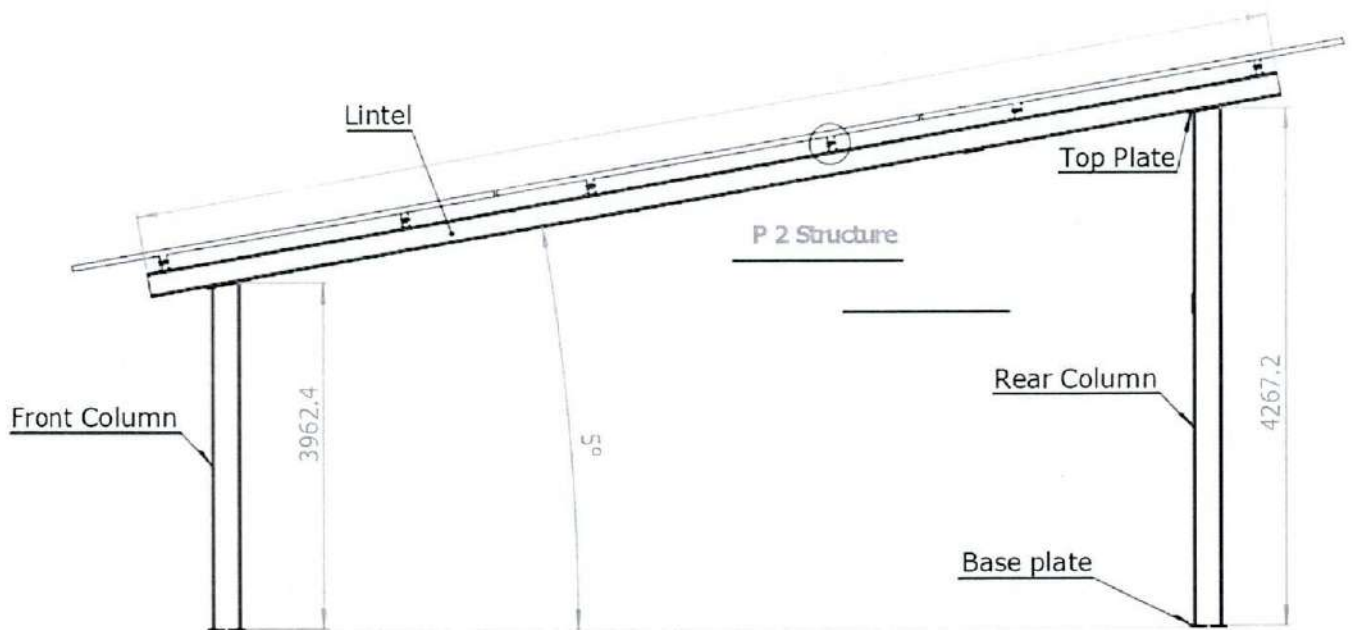
[Handwritten signature]



Evaluation Criteria

- i. Profile of company.
- ii. Valid PEC Registration Certificate of at least C6 or above Category
- iii. Valid Alternative Energy Development Board (AEDB) at least C3 or above category registration certificate/ license
- iv. List of 60 KW or above projects completed in last three years Purchase Orders should be attached with technical bid
- v. Minimum 3 years' experience in Solar from the date of incorporation
- vi. System design report generated through solar PV simulation software (Helioscope) year wise AC energy injection in grid.
- vii. Legal registered entity (Sole Proprietor, Registration with SECP or Registrar of Firm) having active NTN, GST and PST, if applicable
- viii. Complete Income Tax Return for last one tax year
- ix. An affidavit on Rs 100/- Stamp Paper which illustrate that currently they are not black listed by PPRA Punjab, and PIEDMC, Quaid-e-Azam Industrial Estate Board, Lahore
- x. Details of all the items & specifications provided by supplier against items detailed as given at annex 'A' on Company Letter Head with signed and stamped.
- xi. After Sale Service and Warranty for 1 Year (Signed Statement on Company Letter Head)
- xii. Acceptance of technical scope of work and requirement of project as provided in Annex 'B' on Company Letter Head with signed and stamped.
- xiii. Signed and Stamped Complete bidding document.
- xiv. Bank Draft of the Bid Security must be attached with technical proposal as per estimated cost mentioned in the Tender notice/Invitation to Bid.



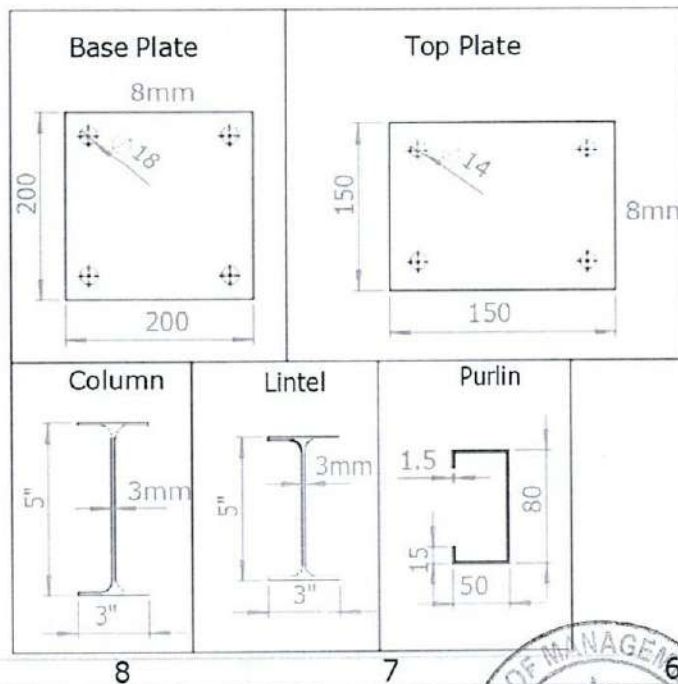
ELEVATED P2 STRUCTURAL DRAWING / DIAGRAM

Support angle: 38x38x1.5mm

End & Mid Clump: 60mm

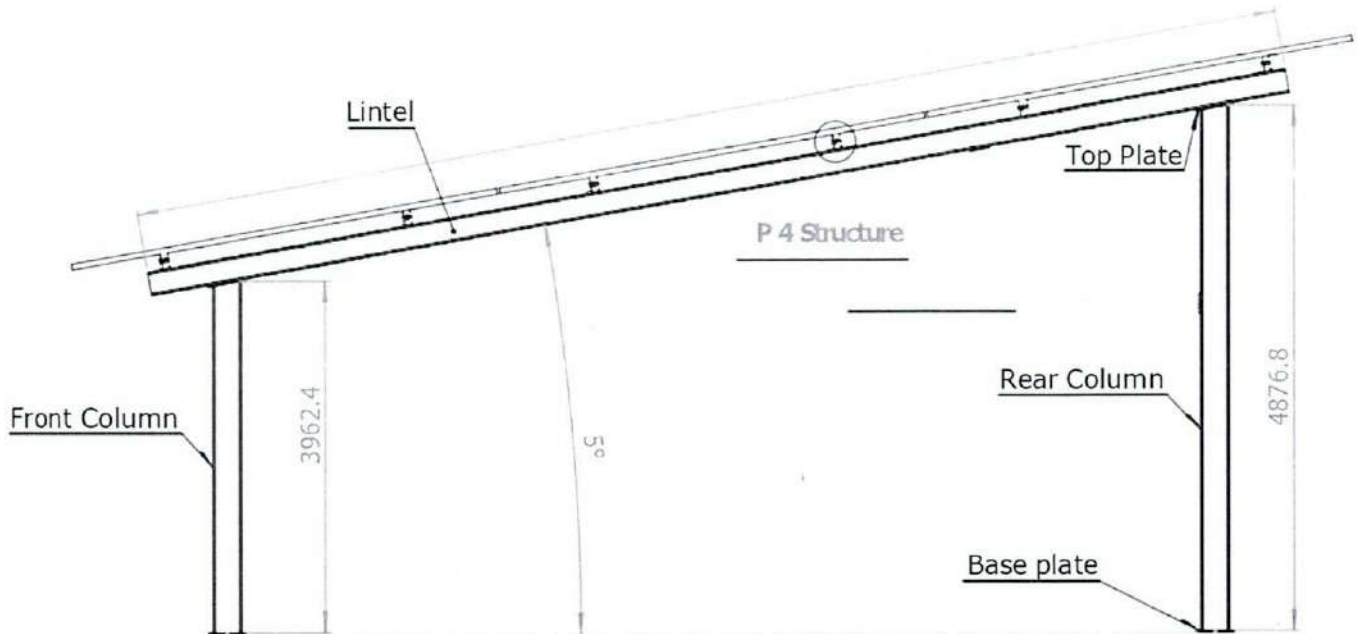
SS Nuts Bolts: 8x70mm

GI Nuts Bolts: 10x25mm



Handwritten signature and initials in blue ink.



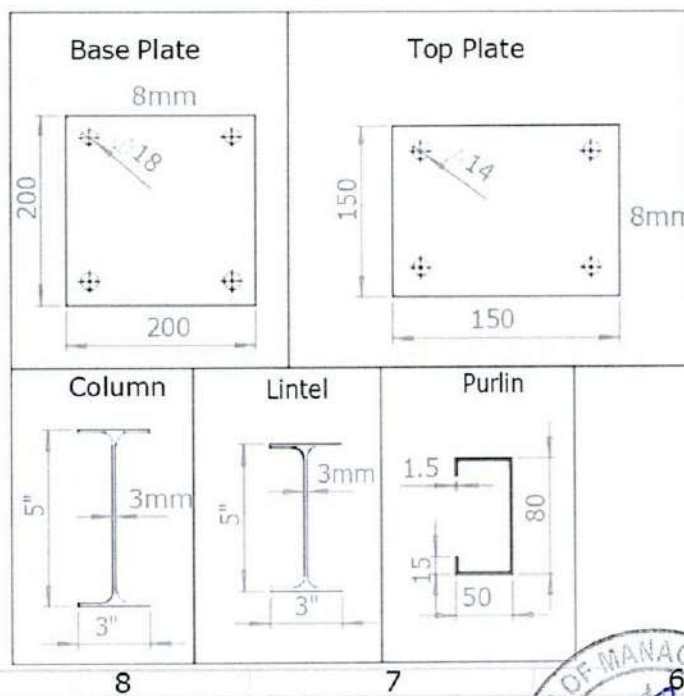
ELEVATED P4 STRUCTURAL DRAWING / DIAGRAM

Support angle: 38x38x1.5mm

End & Mid Clump: 60mm

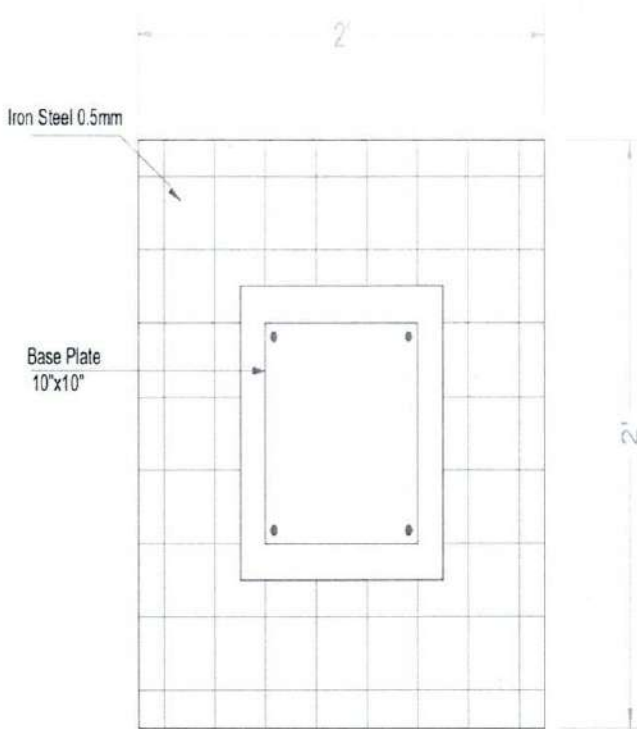
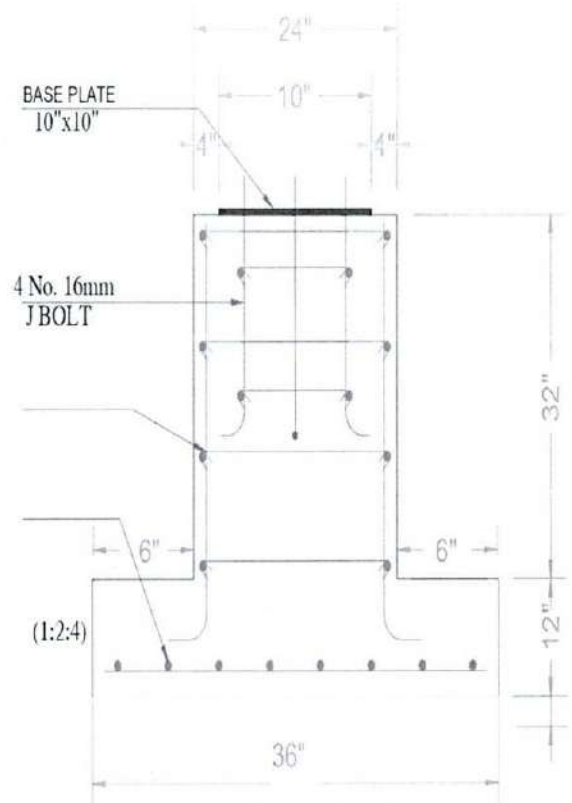
SS Nuts Bolts: 8x70mm

GI Nuts Bolts: 10x25mm



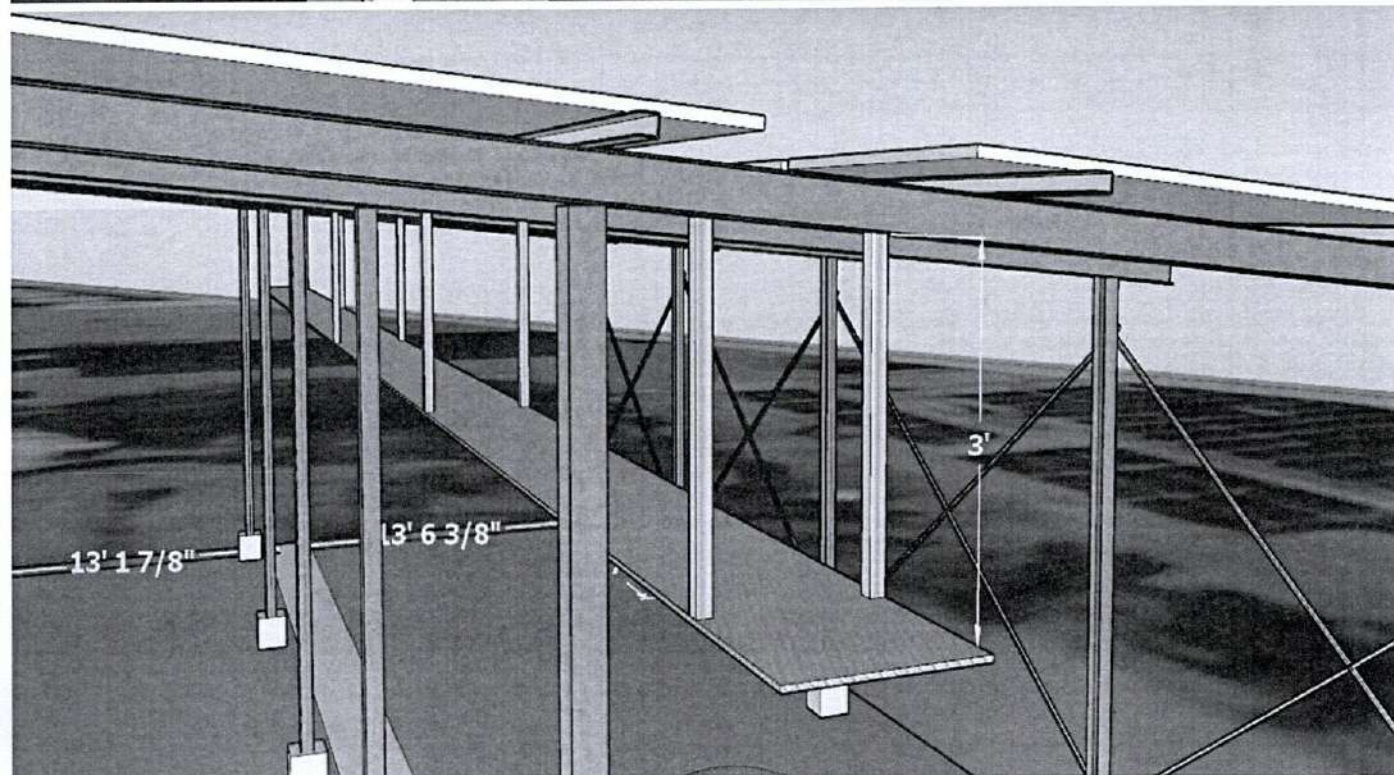
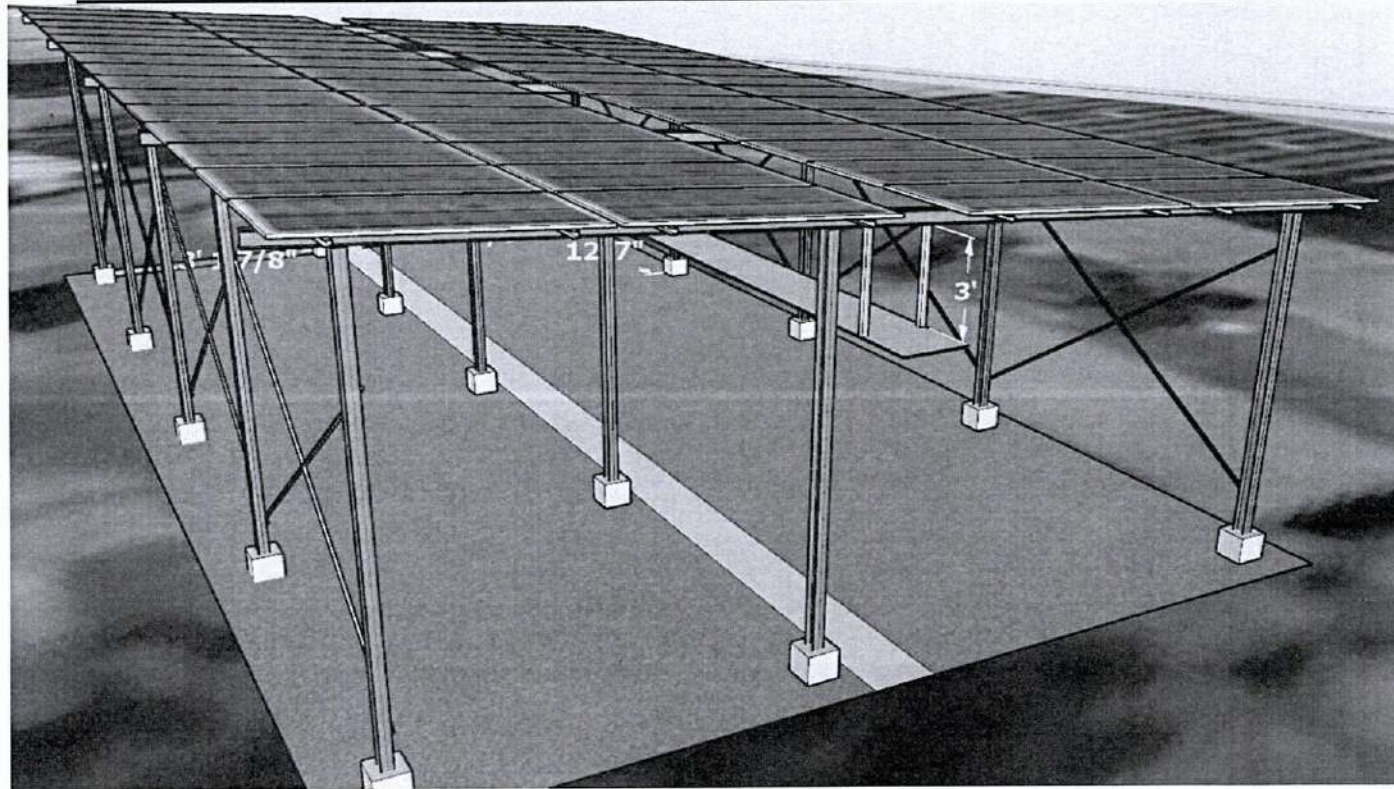
Handwritten signatures and initials.



TYPICAL COULUMN FOOTING DRAWING / DIAGRAM**PLAN****TYPICAL COLUMN FOOTING****STRUCTURE SPECIFICATION DETAILS**

1. Column : 76.2x127x3mm (WT=1.6 KG per foot)(MS)
2. Lintel: 76.2x127x3mm (WT=1.6 KG per foot)(MS)
3. Purlin : 80x50x15x1.5mm (WT= 800 G per foot)(GI)
4. Base Plate : 254x254x10mm (MS)
5. Rafter Base plate : 150x150x8mm (MS)
6. Support angle : 38x38x1.5mm (MS)
7. End and Mid Clump: 60mm (SS)
8. Joint Plate : 70x40x5mm (MS)
9. SS Nut Bolts : 10x25mm (SS)
10. J- Bolts : 16mm (GI)
11. No of column: 35 Nos

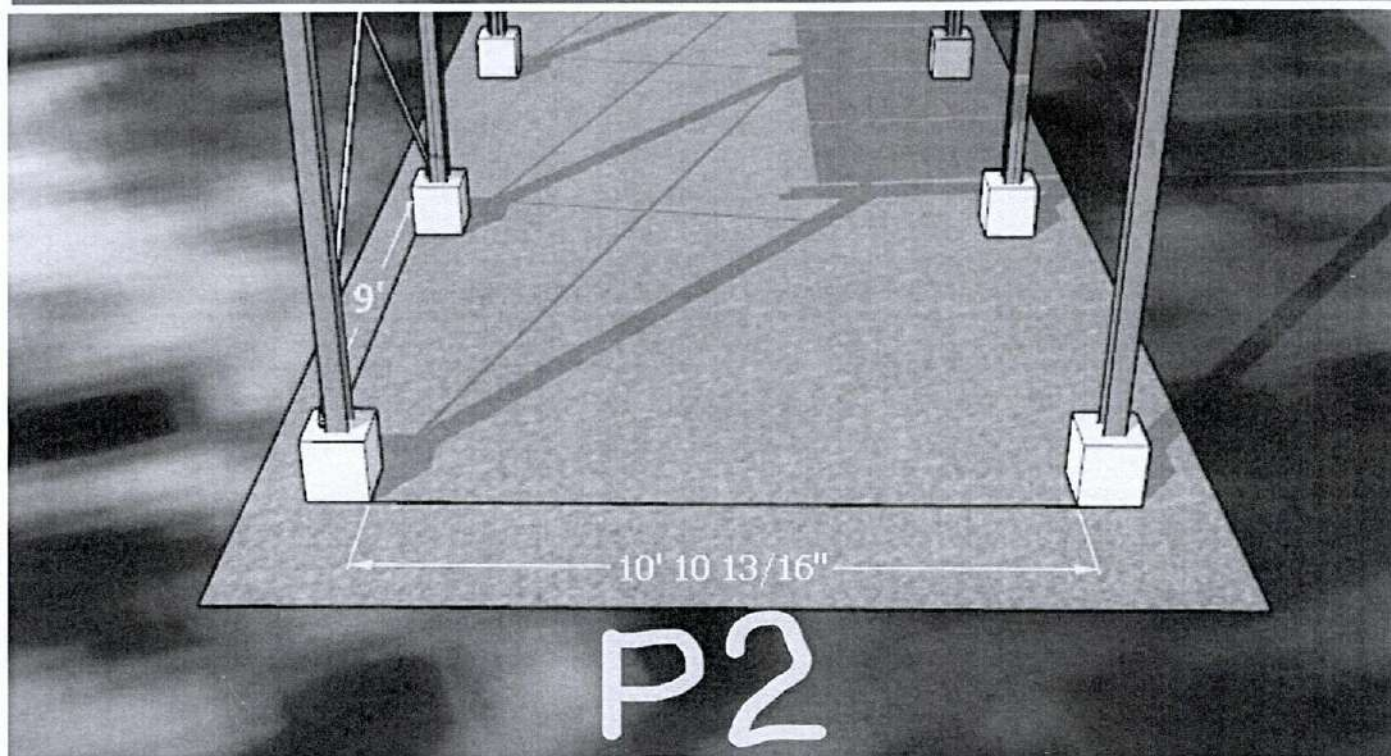
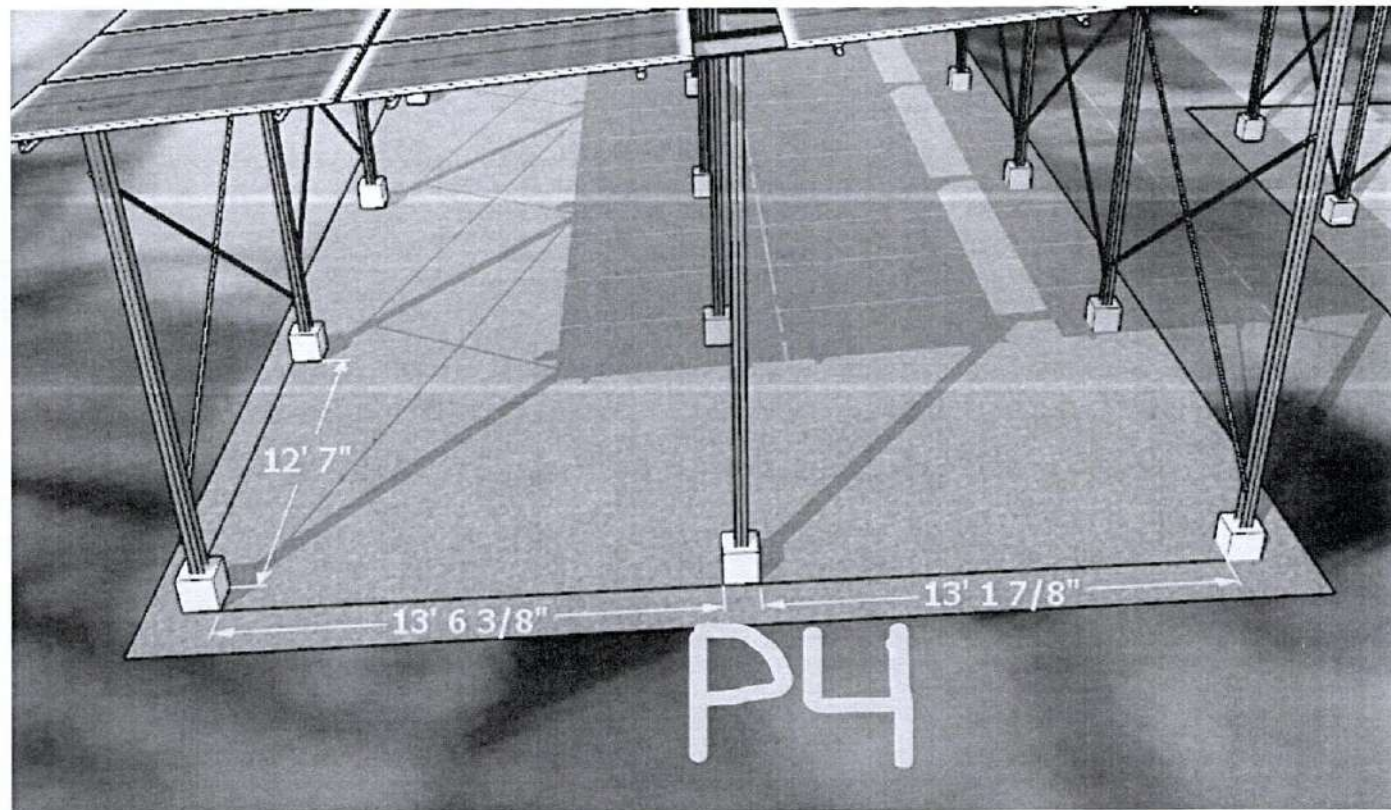


TYPICAL SOLAR STRUCTURE WALKWAY AND STRUCTURE DESIGN / DRAWING

IMPORTANT NOTE: Support Angles must be in between of each column (either front or back side) of solar structure

[Handwritten signature]

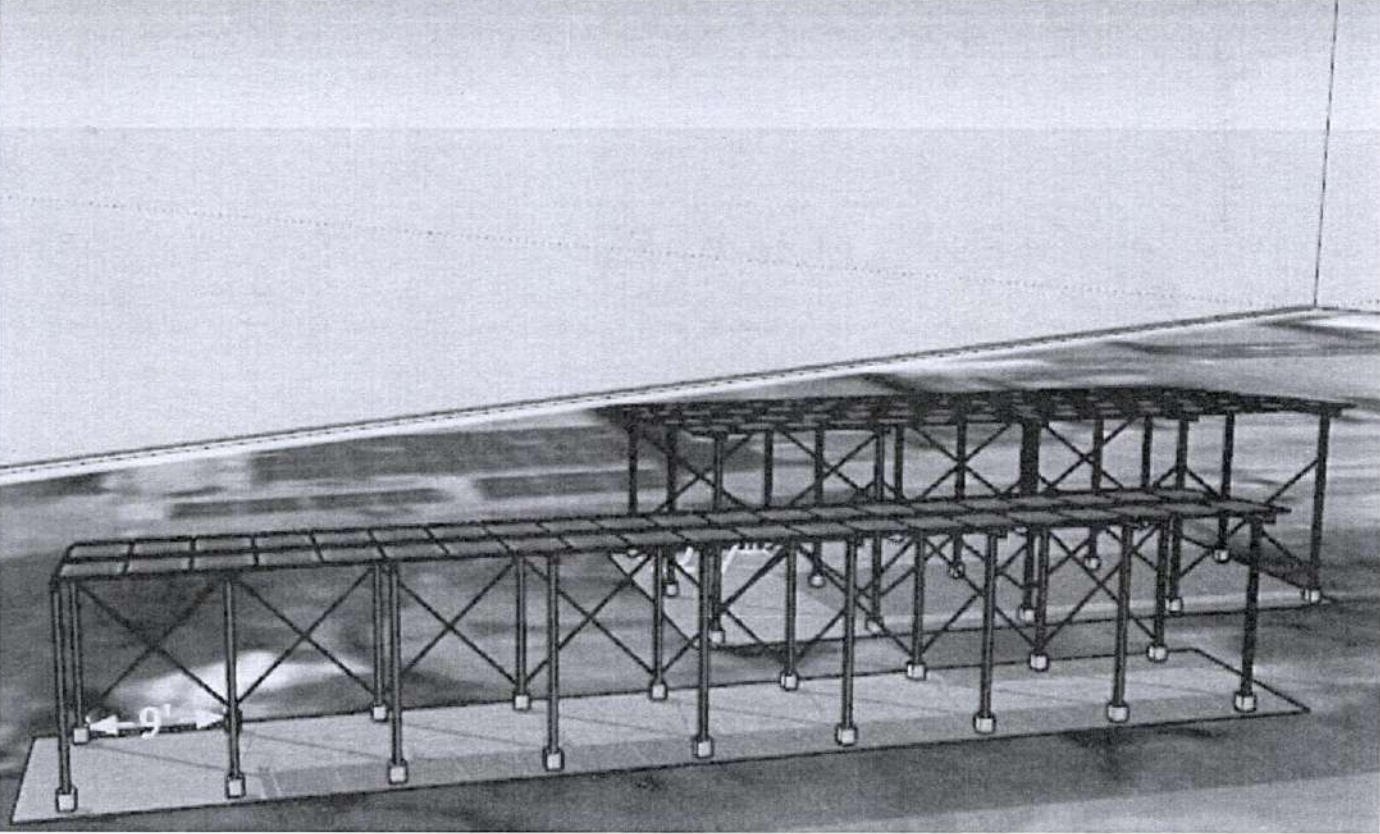
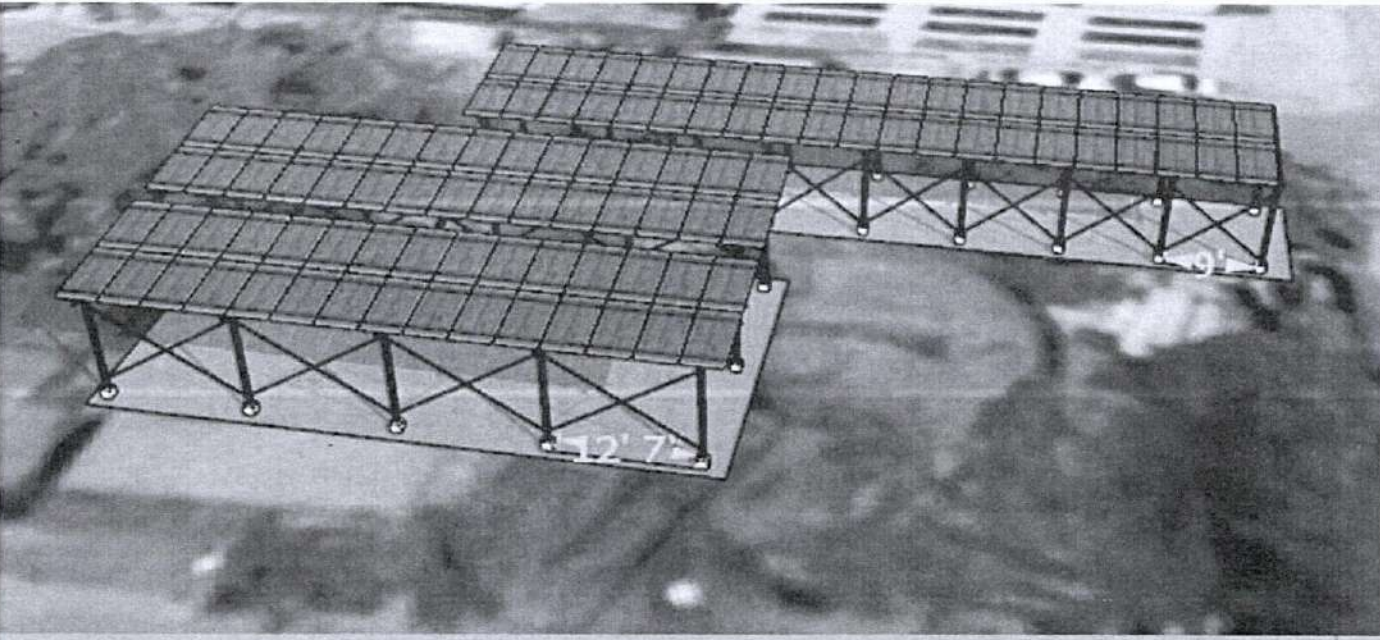


TYPICAL SOLAR P4 & P2 ELEVATED STRUCTURAL DESIGN / DRAWING

IMPORTANT NOTE: Support Angles must be in between of each column (either front or back side) of solar structure

Handwritten signature



TYPICAL SOLAR P4 & P2 ELEVATED STRUCTURAL DESIGN / DRAWING

IMPORTANT NOTE: Support Angles must be in between of each column (either front or back side) of solar structure.

All prospective bidders are **strongly advised to conduct a site visit** prior to the submission of their bids in order to thoroughly understand the site conditions, assess installation requirements, and address any design or technical queries. Site visits may be carried out from the date of this notice **up to the bid submission and closing date, i.e. 13th January 2026**, during regular working days and hours (**Monday to Friday, from 09:00 AM to 05:00 PM**).

Handwritten signature

